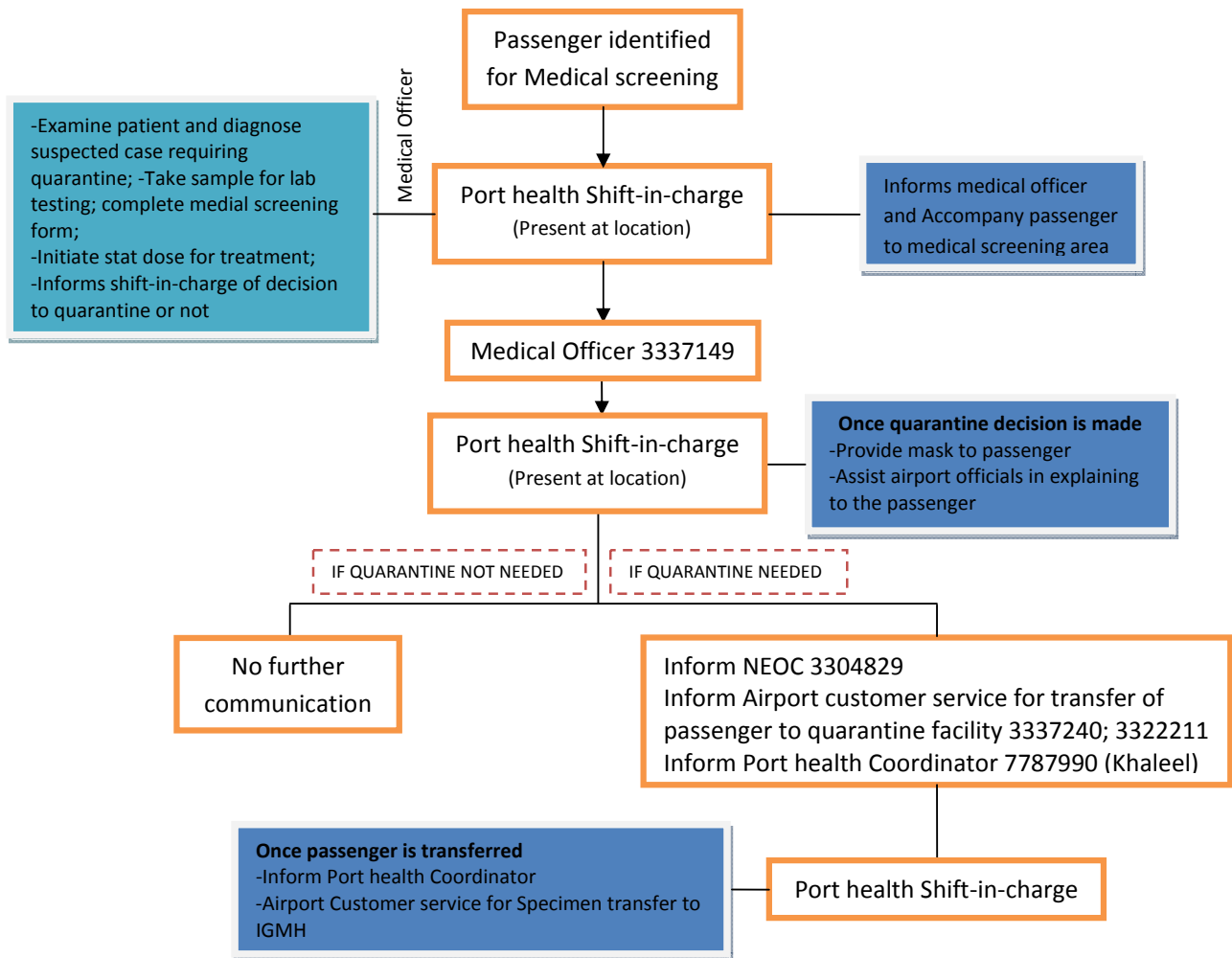


Influenza A (H1N1) Preparedness

Port Health Communication at Male' International Airport



Responsibilities of port health shift-in-charge

1. Ensure health screening is conducted as per the protocol (Screening algorithm S09)
2. Ensure all necessary documentations (health declaration forms and medical screening forms) are completed at the two stages of health screening
3. Ensure all forms, PPE, medicines equipments/tools are available for health screening and sample collection and transfer, and initiating treatment
4. Ensure staff are following the personal protection requirement as per the guideline (PPE guidelines G-PP-S09 & G-PP-M09)
5. Send the completed health declaration and medical screening forms to NEOC at the end of the shift
6. Update Port health coordinator at the beginning of the shift and at the end of the shift