

Social Security Online

[Professionals Home](#)

Disability Programs



Medical/Professional Relations

Disability Evaluation Under Social Security

(Blue Book- August 2010)

102.00 Special Senses and Speech - Childhood

Section

102.00 Special Senses and Speech

A. *How do we evaluate visual disorders?*

[Adult Listings \(Part A\)](#)

102.01

[Category of Impairments, Special Sense Organs](#)

1. **What are visual disorders?** Visual disorders are abnormalities of the eye, the optic nerve, the optic tract, the brain that may cause a loss of visual acuity or visual fields. A loss of visual acuity limits your ability to distinguish detail, read, do fine work, or perform other appropriate activities. A loss of visual fields limits your ability to perceive visual stimuli in the peripheral extent of vision.

[Childhood Listings \(Part B\)](#)[General Information](#)

102.02

[Loss of Visual Acuity](#)[Evidentiary Requirements](#)[Listing of Impairments \(overview\)](#)

102.03

[Contraction of the visual field in the better eye](#)

2. **How do we define statutory blindness?** Statutory blindness is defined in sections 216(i)(1) and 1614(a)(2) of the Social Security Act (the Act). The Act defines blindness as visual acuity of 20/200 or less in the better eye with the use of a corrective lens. We use your best-corrected visual acuity for distance in the better eye when we determine if this definition is met. The Act provides that an eye that has a visual field limitation such that the widest diameter of the visual field subtends an angle no greater than 20 degrees is considered as having visual acuity of 20/200 or less. You have statutory blindness only if your visual disorder meets the criteria of 102.02 or 102.03A. You do not have statutory blindness if your visual disorder medically equals the criteria of 102.02 or 102.03A, or if it meets or medically equals 102.03B, 102.03C, or 102.04. If your visual disorder medically equals the criteria of 102.02 or 102.03A, or if it meets or medically equals 102.03B, 102.03C, or 102.04, we will find that you have a disability if your visual disorder also meets the duration requirement.

102.4

[Loss of visual efficiency](#)

102.10

[Hearing loss not treated with cochlear implantation](#)

102.11

[Hearing loss treated with cochlear implantation](#)[Back to Top](#)

3. **What evidence do we need to establish statutory blindness under title XVI?** For title XVI, the only evidence we need to establish statutory blindness is evidence showing that your visual acuity in your better eye or your visual field in your better eye meets the criteria in 102.00A2, provided that those measurements are consistent with the other evidence in your case record. We do not need to document the cause of your blindness. Also, there is no duration requirement for statutory blindness under title XVI (see

§§416.981 and 416.983).

4. *What evidence do we need to evaluate visual disorders, including those that result in statutory blindness under tit*

a. To evaluate your visual disorder, we usually need a report of eye examination that includes measurements of the best-corrected visual acuity or the extent of the visual fields, as appropriate. If there is a loss of visual acuity or visual fields, the cause of the loss must be documented. A standard eye examination will usually reveal the cause of any visual acuity loss. An eye examination also reveals the cause of some types of visual field deficits. If the eye examination does not reveal the cause of the visual loss, we request the information that was used to establish the presence of the visual disorder.

[Back to Top](#)

b. A cortical visual disorder is a disturbance of the posterior visual pathways or occipital lobes of the brain in which the visual system does not interpret what the eyes are seeing. It may result from causes as traumatic brain injury, stroke, cardiac arrest, near drowning, a central nervous system infection such as meningitis or encephalitis, a tumor, or surgery. It can be temporary or permanent, and the amount of visual loss can vary. It is possible to have a cortical visual disorder and not have any abnormalities observed in a standard eye examination. Therefore, a diagnosis of a cortical visual disorder must be confirmed by documentation of the cause of the brain lesion. If neuroimaging or visual evoked response (VER) testing was performed, we will request a copy of the report or other medical evidence that describes the findings of the report.

c. If your visual disorder does not satisfy the criteria in 102.02, 102.03, or 102.04, we will also request a description of how your visual disorder impacts your ability to function.

[Back to Top](#)

5. *How do we measure best-corrected visual acuity?*

a. *Testing for visual acuity.*

(i) When we need to measure your best-corrected visual acuity, we will use visual acuity testing that was carried out using Snellen methodology or any other testing methodology that is comparable to Snellen methodology.

(ii) We consider tests such as the Landolt C test or the tumbling letter test, which are used to evaluate young children who are unable to participate in testing using Snellen methodology, to be comparable to testing using Snellen methodology. These alternate methods of measuring visual acuity should be performed by specialists with expertise in assessment of childhood vision.

(iii) If you are unable to participate in testing using Snellen methodology or other comparable testing, we will consider your fixation and visual-following behavior. If both these behaviors are absent, we will consider the anatomical findings or the results of neuroimaging, electroretinogram, or VER testing when this test has been performed.

[Back to Top](#)

b. Determining best-corrected visual acuity.

(i) Best-corrected visual acuity is the optimal visual acuity attained with the use of a corrective lens. In some instances, this assessment may be performed using a specialized lens; for example, a contact lens. We will use the visual acuity measurements obtained with a specialized lens only if you have demonstrated the ability to use the specialized lens on a sustained basis. However, we will not use visual acuity measurements obtained with telescopic lenses because they significantly reduce the visual field. If you have an absent response to VER testing in an eye, we can determine that your best-corrected visual acuity is 20/200 or less in that eye. However, if you have a positive response to VER testing in an eye, we will not use that result to determine your best-corrected visual acuity in that eye. Additionally, we will not use the results of pinhole testing or automated refraction to determine your best-corrected visual acuity.

(ii) We will use the best-corrected visual acuity for distance in your better eye when we determine whether your loss of visual acuity satisfies the criteria in 102.02A. The best-corrected visual acuity distance is usually measured by determining what you can see at 20 feet. If your visual acuity is measured for a distance other than 20 feet, we will convert it to a 20-foot measurement. For example, if your visual acuity is measured at 10 feet and is reported as 10/80, we will convert this to 20/80.

[Back to Top](#)

(iii) If you cannot participate in visual acuity testing, we will determine that your best-corrected visual acuity is 20/200 or less in your better eye if your visual disorder meets the criteria in 102.02B1. To meet 102.02B1, your impairment must result in the absence of fixation and visual-following behavior and abnormal anatomical findings indicating a visual acuity of 20/200 or less in your better eye. Such abnormal anatomical findings include, but are not limited to, the presence of Stage III or worse retinopathy of prematurity despite surgery, hypoplasia of the optic nerve, albinism with macular aplasia, and bilateral optic atrophy. To meet 102.02B2, your impairment must result in the absence of fixation and visual following behavior and abnormal neuroimaging documenting damage to the cerebral cortex which would be expected to preclude the development of a visual acuity better than 20/200 in your better eye. Such abnormal neuroimaging includes, but is not limited to, neuroimaging showing bilateral encephalomyelitis or bilateral encephalomalacia.

[Back to Top](#)

6. *How do we measure visual fields?*

a. *Testing for visual fields.*

(i) We generally need visual field testing when you have a visual disorder that could result in visual field loss, such as glaucoma, retinitis pigmentosa, or optic neuropathy, or when you display behaviors that suggest a visual field loss.

(ii) When we need to measure the extent of your visual field loss, we will use visual field measurements obtained with an automated static threshold perimetry test performed on a perimeter, like the Humphrey Field Analyzer, that satisfies all of the following requirements:

A. The perimeter must use optical projection to generate the test stimuli.

B. The perimeter must have an internal normative database for automatically comparing your performance with that of the general population.

C. The perimeter must have a statistical analysis package that is able to calculate visual field indices, particularly mean deviation.

D. The perimeter must demonstrate the ability to correctly detect visual field loss and correctly identify normal visual fields.

E. The perimeter must demonstrate good test-retest reliability.

F. The perimeter must have undergone clinical validation studies at three or more independent laboratories with results published in peer-reviewed ophthalmic journals.

(iii) The test must use a white size III Goldmann stimulus and a background of 10 apostilbs (10 cd/m²) white background. The stimuli locations must be no more than 6 degrees apart horizontally or vertically. Measurements must be reported on standard charts and include a description of the size and intensity of the test stimulus.

(iv) To determine statutory blindness based on visual field loss (102.03A), we need a test that measures the central 24 to 30 degrees of the visual field; that is, the area measuring 24 to 30 degrees from the point of fixation. Acceptable tests include the Humphrey 30-2 or 24-2 tests.

(v) The criterion in 102.03B is based on the use of a test performed on a Humphrey Field Analyzer that measures the central 30 degrees of the visual field. We can also use comparable results from other acceptable perimeters; for example, a mean defect on an acceptable Octopus test, to determine that the criterion is

102.03B is met. We cannot use tests that do not measure the central 30 degrees of the visual field, such as the Humphrey 24 test, to determine if your impairment meets or medically equals 102.03B.

(vi) We measure the extent of visual field loss by determining the portion of the visual field in which you can see a white III4e stimulus. The “III” refers to the standard Goldmann test stimulus size III, and the “4e” refers to the standard Goldmann intensity filters used to determine the intensity of the stimulus.

[Back to Top](#)

(vii) In automated static threshold perimetry, the intensity of the stimulus varies. The intensity of the stimulus is expressed in decibels (dB). We need to determine the dB level that corresponds to a 4e intensity for the particular perimeter being used. We will then use the dB printout to determine which points would be seen at a 4e intensity level. For example, in Humphrey Field Analyzer: 10 dB stimulus is equivalent to a 4e stimulus. A dB level that is higher than 10 represents a dimmer stimulus, while a dB level that is lower than 10 represents a brighter stimulus. Therefore, for tests performed on Humphrey Field Analyzers, any point seen at 10 dB or higher is a point that would be seen with a 4e stimulus.

(viii) We can also use visual field measurements obtained using kinetic perimetry, such as the Humphrey “SSA Test Kinetic” or Goldmann perimetry, instead of automated static threshold perimetry. The kinetic test must use a white III4e stimulus projected on a white 31.5 apostilb (10cd/m²) background. In automated kinetic tests, such as the Humphrey “SSA Test Kinetic,” testing along a meridian stops when you see the stimulus. Because automated kinetic testing does not detect limitations in the central visual field. If your visual disorder has progressed to the point which it is likely to result in a significant limitation in the central visual field, such as a scotoma (see 102.00A8c), we will not use automated kinetic perimetry to evaluate your visual field loss. Instead, we will assess your visual field loss using automated static threshold perimetry or manual kinetic perimetry.

[Back to Top](#)

(ix) We will not use the results of visual field screening tests, such as confrontation tests, tangent screen tests, or automated static screening tests, to determine that your impairment meets or medically equals a listing, or functionally equals the listings. However, we can consider normal results from visual field screening tests to determine whether your visual disorder is severe when these test results are consistent with the other evidence in your case record. (See § 416.924(c).) We will not consider normal results to be consistent with the other evidence if either of the following applies:

A. The clinical findings indicate that your visual disorder has

progressed to the point that it is likely to cause visual field loss

B. You have a history of an operative procedure for retinal detachment.

b. Use of corrective lenses. You must not wear eyeglasses during the visual field examination because they limit your field of vision. Contact lenses or perimetric lenses may be used to correct visual acuity during the visual field examination in order to obtain the accurate visual field measurements. For this single purpose, you do not need to demonstrate that you have the ability to use the contact or perimetric lenses on a sustained basis.

[Back to Top](#)

7. How do we calculate visual efficiency?

a. Visual acuity efficiency. We use the percentage shown in Table 1 that corresponds to the best-corrected visual acuity for distance in your better eye.

b. Visual field efficiency. We use kinetic perimetry to calculate visual field efficiency by adding the number of degrees seen along the eight principal meridians in your better eye and dividing by 500 (See Table 2.)

c. Visual efficiency. We calculate the percent of visual efficiency by multiplying the visual acuity efficiency by the visual field efficiency and converting the decimal to a percentage. For example, if your visual acuity efficiency is 75 percent and your visual field efficiency is 64 percent, we will multiply 0.75×0.64 to determine that your visual efficiency is 0.48, or 48 percent.

[Back to Top](#)

8. How do we evaluate specific visual problems?

a. Statutory blindness. Most test charts that use Snellen methodology do not have lines that measure visual acuity between 20/100 and 20/200. Newer test charts, such as the Bailey-Lovis and the Early Treatment Diabetic Retinopathy Study (ETDRS), do have lines that measure visual acuity between 20/100 and 20/200. If your visual acuity is measured with one of these newer charts, and you cannot read any of the letters on the 20/100 line, we will determine that you have statutory blindness based on a visual acuity of 20/100 or less. For example, if your best-corrected visual acuity for distance in the better eye was determined to be 20/160 using an ETDRS chart, we will find that you have statutory blindness.

Regardless of the type of test chart used, you do not have statutory blindness if you can read at least one letter on the 20/100 line. For example, if your best-corrected visual acuity for distance in the better eye was determined to be 20/125+1 using an ETDRS chart, we will find that you do not have statutory blindness as you are able to read one letter on the 20/100 line.

b. *Blepharospasm*. This movement disorder is characterized by repetitive, bilateral, involuntary closure of the eyelids. If you have this disorder, you may have measurable visual acuities and visual fields that do not satisfy the criteria of 102.02 or 102.03.

Blepharospasm generally responds to therapy. However, if it is not effective, we will consider how the involuntary closure of eyelids affects your ability to maintain visual functioning over time.

c. *Scotoma*. A scotoma is a non-seeing area in the visual field surrounded by a seeing area. When we measure the visual field, we subtract the length of any scotoma, other than the normal blind spot, from the overall length of any diameter on which it falls.

[Back to Top](#)

B. How do we evaluate hearing loss?

1. What evidence do we need?

a. We need evidence showing that you have a medically determinable impairment that causes your hearing loss and audiometric measurements of the severity of your hearing loss generally require both a complete otologic examination and audiometric testing to establish that you have a medically determinable impairment that causes your hearing loss. You should have this audiometric testing within 2 months of the complete otologic examination. Once we have evidence that you have a medically determinable impairment, we can use the results of the audiometric testing to assess the severity of your hearing loss without another complete otologic examination. We will consider your test scores together with any other relevant information we have about your hearing, including information from outside of the test setting.

b. The complete otologic examination must be performed by a licensed physician (medical or osteopathic doctor). It must include your medical history, your description of how your hearing loss affects you, and the physician's description of the appearance of the external ears (pinnae and external ear canals), evaluation of the tympanic membranes, and assessment of any middle ear abnormalities.

c. Audiometric testing must be performed by, or under the direct supervision of, an otolaryngologist or by an audiologist qualified to perform such tests. We consider an audiologist to be qualified if he or she is currently and fully licensed or registered as a clinical audiologist by the State or U.S. territory in which he or she practices. If no licensure or registration is available, the audiologist must be currently certified by the American Board of Audiology or have a Certificate of Clinical Competence (CCC-A) from the American Speech-Language-Hearing Association (ASHA).

[Back to Top](#)

2. What audiometric testing do we need when you do not have a cochlear implant?

a. **General.** We need either physiologic or behavioral testing (other than screening testing, see 102.00B2g) that is appropriate for your age at the time of testing. See 102.00B2c-102.00B2f. We will make every reasonable effort to obtain the results of physiologic testing that has been done; however, we will not purchase such testing.

b. **Testing requirements.** The testing must be conducted in accordance with the most recently published standards of the American National Standards Institute (ANSI). You must not wear hearing aids during the testing. Additionally, a person described in 102.00B1c must perform an otoscopic examination immediately before the audiometric testing. (An **otoscopic examination** provides a description of the appearance of your external ear canal and an evaluation of the tympanic membranes. In these rules, we use the term to include otoscopic examinations performed by physicians and otoscopic inspections performed by audiologists and others.) The otoscopic examination must show that there are no conditions that would prevent valid audiometric testing, such as wax in the ear, ear infection, or obstruction in an ear canal. The person performing the test should also report on any other factors, such as your ability to maintain attention, that can affect the interpretation of the test results.

c. Children from birth to the attainment of age 6 months.

(i) We need physiologic testing, such as auditory brainstem response (ABR) testing.

(ii) To determine whether your hearing loss meets 102.10A, we will average your hearing thresholds at 500, 1000, 2000, and 4000 Hertz (Hz). If you do not have a response at a particular frequency, we will use a threshold of 5 decibels (dB) over the limit of the audiometer.

d. Children from age 6 months to the attainment of age 2.

(i) We need air conduction thresholds determined by a behavioral assessment, usually visual reinforcement audiometry (VRA). We can use ABR testing if the behavioral assessment cannot be completed or if the results are inconclusive or unreliable.

(ii) To determine whether your hearing loss meets 102.10A, we will average your hearing thresholds at 500, 1000, 2000, and 4000 Hertz. If you do not have a response at a particular frequency, we will use a threshold of 5 dB over the limit of the audiometer.

(iii) For this age group, behavioral assessments are often performed in a sound field, and each ear is not tested separately. If each ear is not tested separately, we will consider the test results to represent the hearing in the better ear.

e. Children from age 2 to the attainment of age 5.

[Back to Top](#)

(i) We need air conduction thresholds determined by a behavior assessment, such as conditioned play audiometry (CPA), tang or visually reinforced operant conditioning audiometry (TROCA VROCA), or VRA. If you have had ABR testing, we can use the results of that testing if the behavioral assessment cannot be completed or the results are inconclusive or unreliable.

(ii) To determine whether your hearing loss meets 102.10A, we average your hearing thresholds at 500, 1000, 2000, and 4000 Hz. If you do not have a response at a particular frequency, we will use a threshold of 5 dB over the limit of the audiometer.

(iii) For this age group, behavioral assessments are often performed in a sound field and each ear is not tested separately. If each ear is not tested separately, we will consider the test results to represent the hearing in the better ear.

f. Children from age 5 to the attainment of age 18.

(i) We generally need pure tone air conduction and bone conduction testing, speech reception threshold (SRT) testing (also referred to as "spondee threshold" or "ST" testing), and word recognition testing (also referred to as "word discrimination" or "speech discrimination" testing). This testing must be conducted in a sound-treated booth or room and must be in accordance with the most recently published ANSI standards. Each ear must be tested separately.

(ii) To determine whether your hearing loss meets the air and bone conduction criterion in 102.10B1 or 102.10B3, we will average hearing thresholds at 500, 1000, 2000, and 4000 Hz. If you do not have a response at a particular frequency, we will use a threshold 5 dB over the limit of the audiometer.

(iii) The SRT is the minimum dB level required for you to recognize 50 percent of the words on a standard list of spondee words. (Spondee words are two-syllable words that have equal stress on each syllable.) The SRT is usually within 10 dB of the average pure tone air conduction hearing thresholds at 500, 1000, and 2000 Hz. If the SRT is not within 10 dB of the average pure tone air conduction hearing threshold, the reason for the discrepancy must be documented. If we cannot determine that there is a medical basis for the discrepancy, we will not use the results of the testing to determine whether your hearing loss meets a listing.

(iv) Word recognition testing determines your ability to recognize age-appropriate, standardized list of phonetically balanced monosyllabic words in the absence of any visual cues. This test must be performed in quiet. The list may be recorded or presented live, but in either case, the words should be presented at a level

amplification that will measure your maximum ability to discriminate words, usually 35 to 40 dB above your SRT. However, the amplification level used in the testing must be medically appropriate and you must be able to tolerate it. If you cannot be tested at 30 to 40 dB above your SRT, the person who performs the test should report your word recognition testing score at your highest comfortable level of amplification.

g. Screening testing. Physiologic testing, such as ABR and otoacoustic emissions (OAE), and pure tone testing can be used as hearing screening tests. We will not use these tests to determine that your hearing loss meets or medically equals a listing, or to assess functional limitations due to your hearing loss, when the tests are used only as screening tests. We can consider normal results from hearing screening tests to determine that your hearing loss is not "severe" when these test results are consistent with the other evidence in your case record. See Sec. 416.924(c).

3. What audiometric testing do we need when you have a cochlear implant?

a. If you have a cochlear implant, we will consider you to be disabled until age 5, or for 1 year after initial implantation, whichever is later.

b. After that period, we need word recognition testing performed with any age-appropriate version of the Hearing in Noise Test (HINT) or the Hearing in Noise Test for Children (HINT-C) to determine whether your impairment meets 102.11B. This test must be conducted in quiet in a sound field. Your implant must be functioning properly and adjusted to your normal settings. The sentences should be presented at 60 dB HL (Hearing Level) and without any visual cues.

4. How do we evaluate your word recognition ability if you are not fluent in English?

If you are not fluent in English, you should have word recognition testing using an appropriate word list for the language in which you are most fluent. The person conducting the test should be fluent in the language used for the test. If there is no appropriate word list and no person who is fluent in the language and qualified to perform the test, it may not be possible to measure your word recognition ability. If your word recognition ability cannot be measured, your hearing loss cannot meet 102.10B2 or 102.11B. Instead, we will consider the facts of your case to determine whether you have difficulty understanding words in the language in which you are most fluent and if so, whether that degree of difficulty medically equals 102.10B2 or 102.11B. For example, we will consider how you interact with family members, interpreters, and other persons who speak the language in which you are most fluent.

5. What do we mean by a marked limitation in speech or language as used in 102.10B3?

a. We will consider you to have a marked limitation in speech if

(i) Entire phrases or sentences in your conversation are intelligible to unfamiliar listeners at least 50 percent (half) of the time but not more than 67 percent (two-thirds) of the time on your first attempt and

(ii) Your sound production or phonological patterns (the ways in which you combine speech sounds) are atypical for your age.

b. We will consider you to have a marked limitation in language when your current and valid test score on an appropriate comprehensive, standardized test of overall language function is at least two standard deviations below the mean. In addition, the evidence of your daily communication functioning must be consistent with your test score. If you are not fluent in English, it may not be possible to test your language performance. If we cannot test your language performance, your hearing loss cannot meet 102.10B3. Instead, we will consider the facts of your case to determine whether your hearing loss medically equals 102.10E

C. How do we evaluate impairments that do not meet one of the special senses and speech listings?

1. These listings are only examples of common special senses and speech disorders that we consider severe enough to result in marked and severe functional limitations. If your impairment(s) does not meet the criteria of any of these listings, we must also consider whether you have an impairment(s) that satisfies the criteria of a listing in another body system.

2. If you have a medically determinable impairment(s) that does not meet a listing, we will determine whether the impairment(s) medically equals a listing or functionally equals the listings. (S 416.926 and 416.926a.) We use the rules in § 416.994a when we decide whether you continue to be disabled.

102.01 Category of Impairments, Special Senses and Speech

102.02 Loss of Visual Acuity

A. Remaining vision in the better eye after best correction is 20/400 or less;

OR

B. An inability to participate in testing using Snellen methodology or other comparable visual acuity testing and clinical findings that indicate that fixation and visual-following behavior are absent in the better eye and:

1. Abnormal anatomical findings indicating a visual acuity of 20/400 or less in the better eye; or

2. Abnormal neuroimaging documenting damage to the cerebral cortex which would be expected to prevent the development of visual acuity better than 20/200 in the better eye; or
3. Abnormal electroretinogram documenting the presence of Leber congenital amaurosis or achromatopsia; or
4. An absent response to VEP testing in the better eye.

102.03 Contraction of the visual field in the better eye, with

A. The widest diameter subtending an angle around the point of fixation no greater than 20 degrees;

OR

B. A mean deviation of –22 or worse, determined by automated static threshold perimetry as described in 102.00A6a (v);

OR

C . A visual field efficiency of 20 percent or less as determined by kinetic perimetry (see 102.00A7b).

102.04 Loss of visual efficiency. Visual efficiency of the better eye of 20 percent or less after best correction (see 102.00A7c).

102.10 Hearing loss not treated with cochlear implantation

A. For children from birth to the attainment of age 5, an average air conduction hearing threshold of 50 decibels or greater in the better ear (see 102.00B2).

OR

B . For children from age 5 to the attainment of age 18:

1. An average air conduction hearing threshold of 70 decibels or greater in the better ear and an average bone conduction hearing threshold of 40 decibels or greater in the better ear (see 102.00B2) or
2. A word recognition score of 40 percent or less in the better ear as determined using a standardized list of phonetically balanced monosyllabic words (see 102.00B2f); or
3. An average air conduction hearing threshold of 50 decibels or greater in the better ear and a marked limitation in speech or language (see 102.00B2f and 102.00B5).

102.11 Hearing loss treated with cochlear implantation.

A. Consider under a disability until the attainment of age 5 or 1 year after initial implantation, whichever is later.

OR

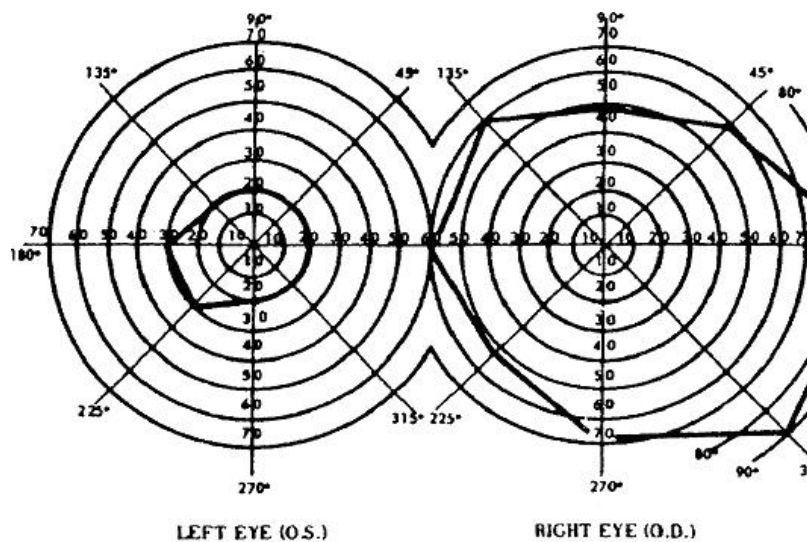
B. Upon the attainment of age 5 or 1 year after initial implantation whichever is later, a word recognition score of 60 percent or less determined using the HINT or the HINT-C (see 102.00B3b).

[Back to Top](#)

Table 1 -- Percentage of Visual Acuity Efficiency Corresponding to the Best-Corrected Visual Acuity Measurement for Distance in Better Eye

Snellen		Percent visual acuity efficiency
English	Metric	
20/16	6/5	100
20/20	6/6	100
20/25	6/7.5	95
20/30	6/9	90
20/40	6/12	85
20/50	6/15	75
20/60	6/18	70
20/70	6/21	65
20/80	6/24	60

Table 2-- Chart of Visual Fields



1. The diagram of the right eye illustrates the extent of a normal

visual field as measured with a III4e stimulus. The sum of the principal meridians of this field is 500 degrees.

2. The diagram of the left eye illustrates a visual field contracte 30 degrees in two meridians and to 20 degrees in the remainin meridians. The percent of visual field efficiency of this field is:
 $(2 \times 30) + (6 \times 20) = 180 \div 500 = 0.36$ or 36 percent visual field efficiency.

[Back to Top](#)



[Privacy Policy](#) | [Website Policies & Other Important Information](#) | [Site Map](#) | [Need Larger Text?](#)
Last reviewed or modified Wednesday Feb 09, 2011